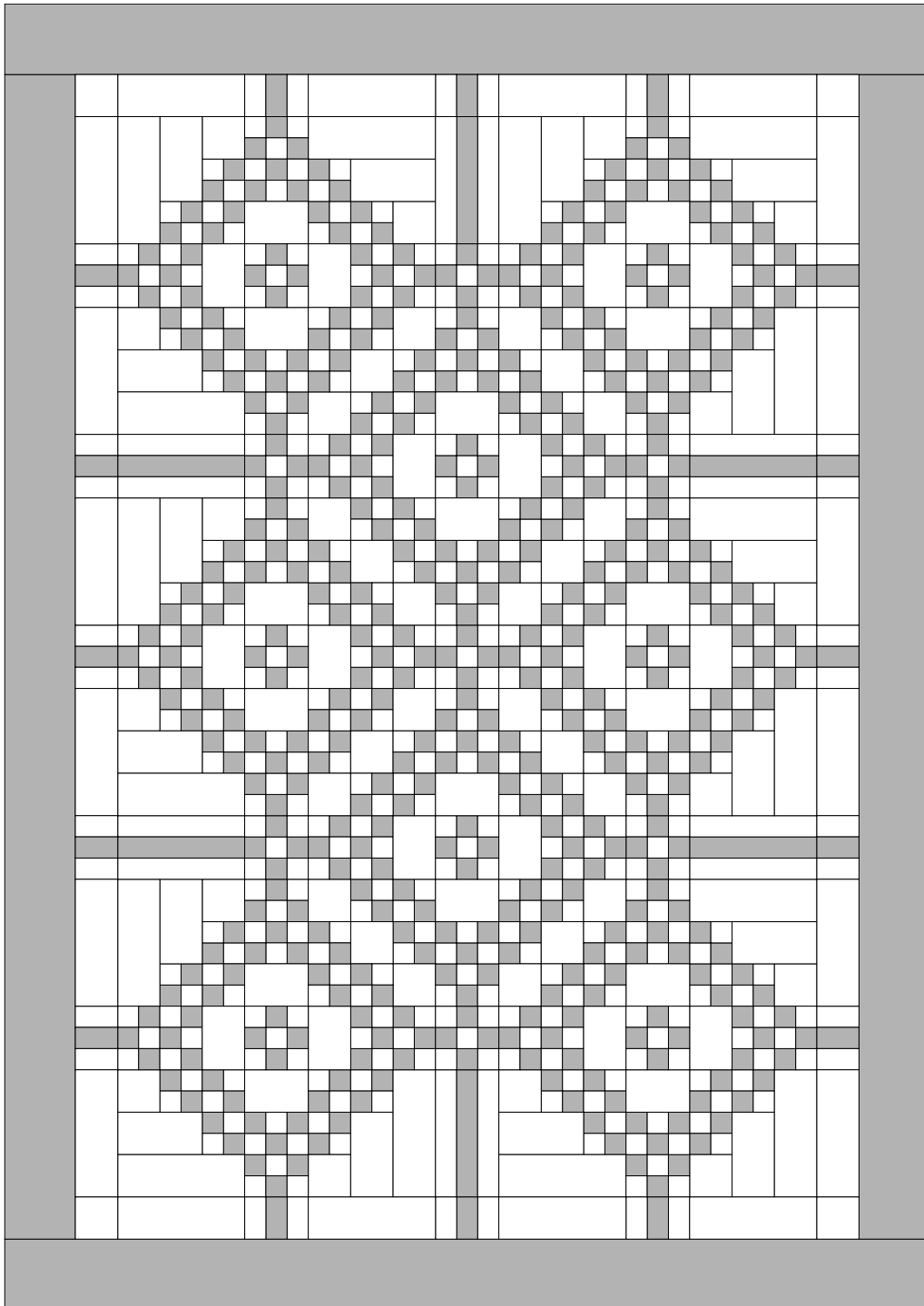


# 4 Patch Frenzy

Lap, Full and Queen Sizes



Designed by  
**Cindy Roth**  
Longarm University, Inc.®  
© 2015

## 4 Patch Frenzy Quilt Two Color Quilt

<b>Yardage Amounts</b> Amounts are generous	<b>Lap Size</b> 65 x 65 inches	<b>Full Size</b> 65 x 96 inches	<b>Queen Size</b> 96 x 96 inches
<b>Fabric A - Light</b>	2-3/4 yards	4 yards	6 yards
<b>Fabric B - Dark</b>	1 yard	1-1/2 yards	2-1/2 yards
<b>Outer Border - Dark Fabric Suggested</b>	1-1/4 yards	1-1/2 yards	1-3/4 yards
<b>Backing Fabric Vertical Seam(s)</b>	4-1/4 yards	6 yards	9 yards two vertical seams
<b>Binding - Dark Fabric Suggested</b>	3/4 yard	1 yard	1 yard

**Batting of choice to fit project size**

### Scrap Fabric Version

<b>Yardage Amounts</b> Amounts are generous	<b>Lap Size</b> 73 x 73 inches	<b>Full Size</b> 73 x 106 inches	<b>Queen Size</b> 104 x 104 inches
<b>Light Scrap Fabrics - Quilt Body</b>	equal to 2-3/4 yards	equal to 4 yards	equal to 6 yards
<b>Dark Scrap Fabrics - Quilt Body</b>	equal to 1 yard	equal to 1-1/2 yard	equal to 2-1/2 yards
<b>Dark/Medium Scrap Fabrics for Border</b>	equal to 1 yard	equal to 1-1/4 yard	equal to 1-3/4 yard
<b>Light Scrap Fabrics for Border</b>	equal to 1 yard	equal to 1-1/4 yard	equal to 1-3/4 yard
<b>Black Fabric for Border</b>	1-1/4 yard	1-1/4 yard	1-1/2 yard

**Refer to the Two Color Quilt for Backing and Binding yardages**

### Cutting Chart ~ wof = width of fabric

<b>Fabric A - Light</b>	<b>Lap Size</b>	<b>Full Size</b>	<b>Queen Size</b>
Cut into _____ <b>2 inch x wof strips</b>	19	30	50
Cut into _____ <b>3-1/2 inch x wof strips</b>	15	22	28
<b>Fabric B - Dark</b>			
Cut into _____ <b>2 inch x wof strips</b>	15	22	40

Border will be cut after the body of the quilt is completed.

Pieces for the Scrap Border will be cut after the body of the quilt is completed. **See Page 17.**

# 4 Patch Frenzy Quilt

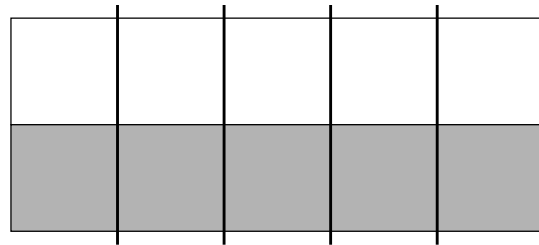
## Constructing the Units

All seams 1/4 inch

### The 4 Patch Unit

Refer to the chart below and stitch the required number of light and dark fabric strips together along one long edge. Press seam towards the darker fabric.

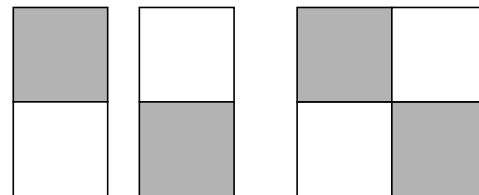
Cut these strips into required number of **2 inch, 2 Patch Units.**



Stitch the 2 Patch Units together as shown at the right to make the **4 Patch Unit.** Press as desired.

Make the required number of **4 Patch Units** for the size of your project.

The completed 4 Patch Unit should measure 3-1/2 x 3-1/2 inches including seam allowance.



	<b>Lap</b>	<b>Full</b>	<b>Queen</b>
2 inch <b>Dark</b> Fabric Strips	6 strips	10 strips	16 strips
2 inch <b>Light</b> Fabric Strips	6 strips	10 strips	16 strips
2 Patch Units	120	192	412
Completed 4 Patch Units	50	96	132

### Constructing Unit A

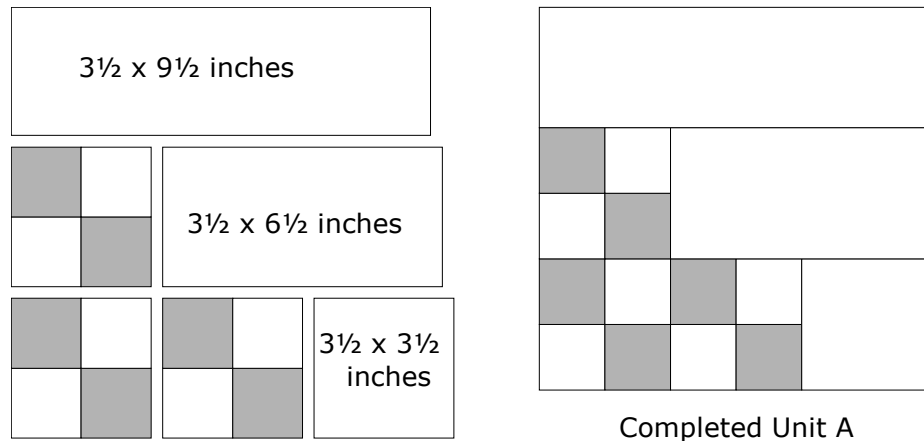
From the 3-1/2 inch Light Fabric strips, follow the chart below and cut the pieces for your project.

	<b>Lap</b>	<b>Full</b>	<b>Queen</b>
<b>3-1/2 inch Light Fabric Strips</b>	6 strips	8 strips	11 strips
3-1/2 x 9-1/2 inch rectangles	12	16	20
3-1/2 x 6-1/2 inch rectangles	12	16	20
3-1/2 x 3-1/2 inch squares	12	16	20

# 4 Patch Frenzy Quilt

Take the **3-1/2 inch Light Fabric** pieces you just cut and the **4 Patch Units** and construct **Unit A** as shown below. Press as desired.

Completed Unit A should measure 9-1/2 x 9-1/2 inches including seam allowance.



	Lap	Full	Queen
<b>Completed Unit A's</b>	12	16	20

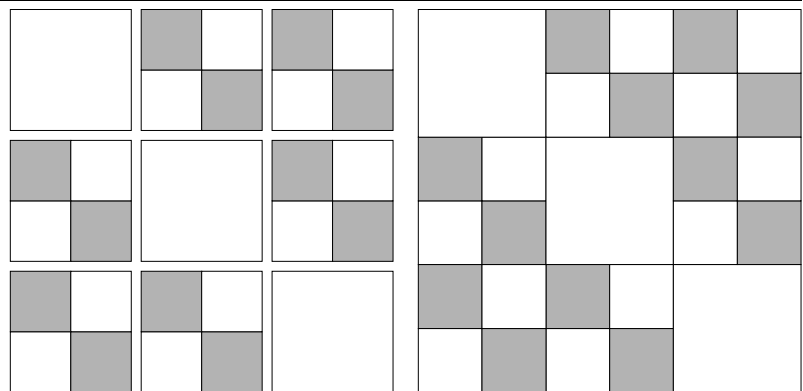
## Constructing Unit B

From the **3-1/2 inch Light Fabric** strips, follow the chart below and cut the following pieces for your project.

	Lap	Full	Queen
<b>3-1/2 inch Light Fabric Strips</b>	1 strip	2 strips	3 strips
3-1/2 x 3-1/2 inch squares	12	24	36

Take the **3-1/2 inch Light Fabric** pieces from above and the **4 Patch Units** and construct **Unit B EXACTLY** as shown at the right. Note the placement of the 4 Patch Units. Press as desired.

Completed **Unit B** should measure 9-1/2 x 9-1/2 inches including seam allowance.



	Lap	Full	Queen
<b>Completed Unit B's</b>	4	8	16

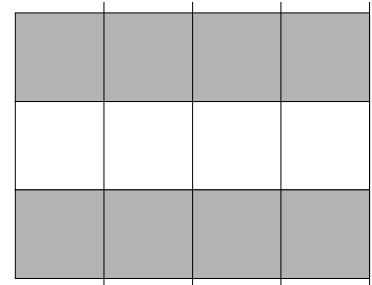
# 4 Patch Frenzy Quilt

## Constructing the 3 Patch Units

### Unit 3-A

Refer to the chart below and place the 2 inch Dark and Light Fabric Strips as shown at the right. Stitch along the long edges and press towards the dark fabrics. Make the required number of Unit 3-A strip sets.

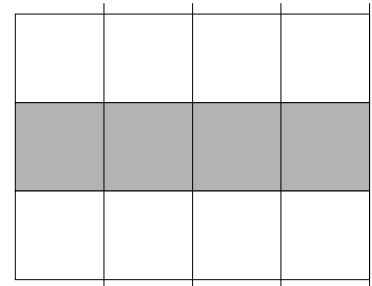
Cut this strip set into 2 inch pieces and place on a pile.



### Unit 3-B

Refer to the chart below and place the 2 inch Light and Dark Fabric Strips as shown at the right. Stitch along the long edges and press towards the dark fabrics. Make the required number of Unit 3-A strip sets.

Cut into 2 inch pieces and place on a pile.



	Lap	Full	Queen
2 inch Dark Fabric Strips	9 strips	13 strips	22 strips
2 inch Light Fabric Strips	9 strips	14 strips	23 strips
Unit 3-A Strip Sets	3	4	7
Unit 3-B Strip Sets	3	5	8
Total Unit 3-A's	49	79	129
Total Unit 3-B's	58	94	154

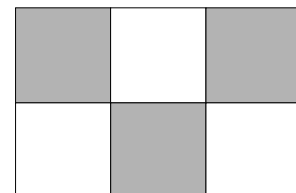
## Constructing Unit C

From the **3-1/2 inch Light Fabric** strips, follow the chart below and cut the following pieces for your project.

	Lap	Full	Queen
<b>3-1/2 inch Light Fabric Strips</b>	3 strips	4 strips	7 strips
3-1/2 x 5 inch rectangles	20	32	52

Stitch together Unit 3-A and Unit 3-B together along the long edge. Press as desired.

Label as Unit 3-A/B



# 4 Patch Frenzy Quilt

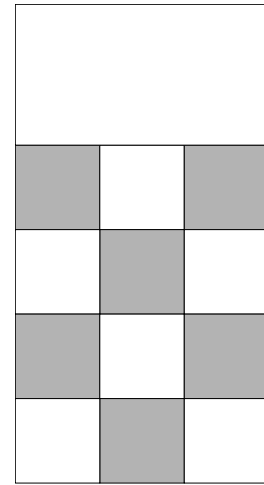
Stitch 2, Units 3 A/B together as shown at the right.

Stitch the 3-1/2 x 5 inch rectangle to the Units 3 A/B's EXACTLY as shown at the right.

Press as desired.

Completed **Unit C** should measure 5 inches x 9 inches including seam allowances.

Refer to the chart below and make the required number of Unit C's.



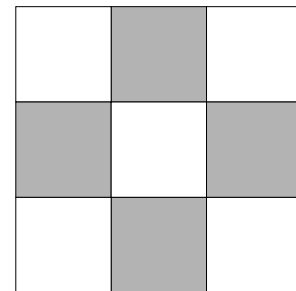
Completed Unit C

	Lap	Full	Queen
Unit 3-A's needed	40	64	104
Unit 3-B's needed	40	64	104
Completed Unit C's	20	32	52

## Constructing Unit D - 9 Patch Block

Use the remaining **Units 3A** and **Units 3B** to make the 9 Patch blocks EXACTLY as shown at the right. Press as desired.

Completed **Unit D** should measure 5 inches square including seam allowances.



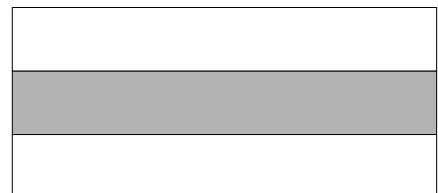
Completed Unit D

	Lap	Full	Queen
Unit D's needed	9	15	25

## Constructing Units E and F

Refer to the chart on the next page and place the Light and Dark Strips as shown at the right. Stitch along the long edges and press towards the dark fabrics.

Make the required number of pieced strips for your project size.



# 4 Patch Frenzy Quilt

	Lap	Full	Queen
2 inch Light Fabric Strips	4 strips	6 strips	8 strips
2 inch Dark Fabric Strips	2 strips	3 strips	4 strips
Total Strip Sets	2	3	4

Refer to the chart below and cut the required number of **Unit E** and **Unit F** from these strip sets.



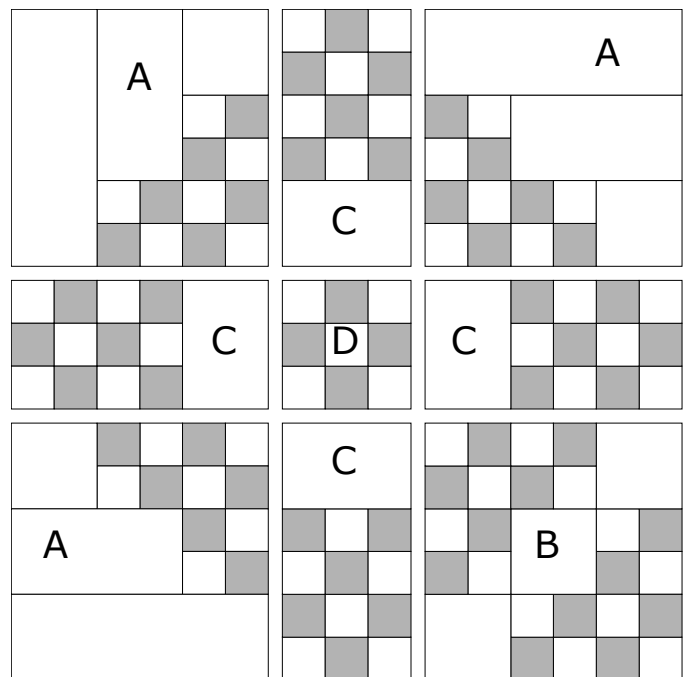
	Lap	Full	Queen
<b>Unit E</b> , 5 x 9-1/2 inch rectangles	4	6	8
<b>Unit F</b> , 5 x 3-1/2 inch rectangles	12	16	20
Measurements include seam allowances			

## Construct the Blocks

### Block 1

You will need - 3 - Unit A's, 1 - Unit B,  
4 - Unit C's, 1 - Unit D

Place these Units as shown at the right and  
stitch together. Press as desired.



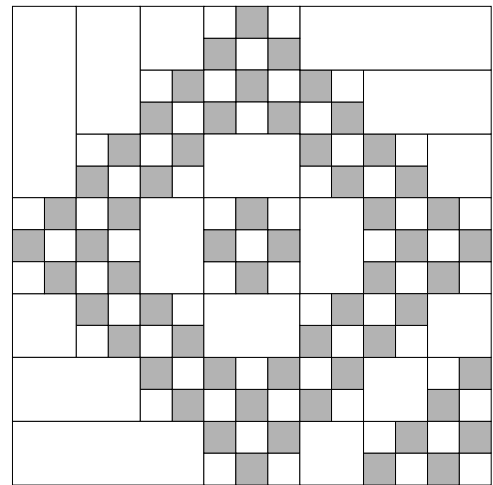
# 4 Patch Frenzy Quilt

Refer to the chart below and make the required number of **Block 1's** needed for your project.

## Label as Block 1

Block 1 should measure 23 inches square including seam allowances.

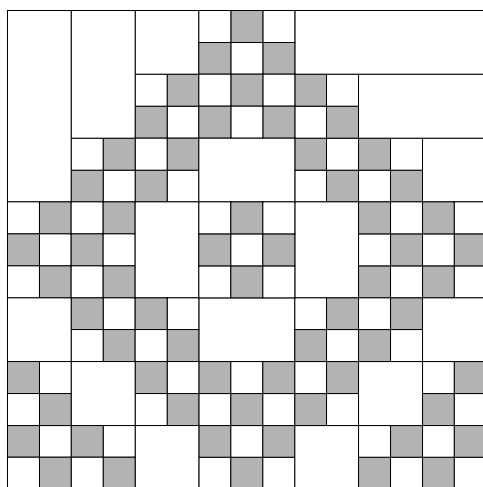
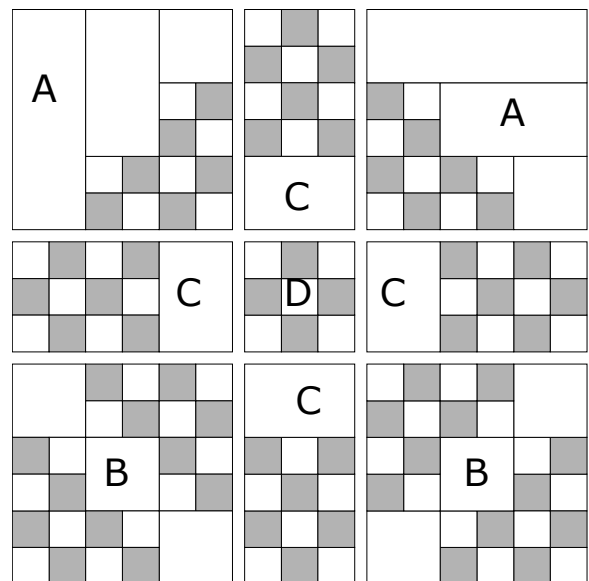
	<b>Block 1's Needed</b>
<b>Lap</b>	4
<b>Full</b>	4
<b>Queen</b>	4



## Block 2

You will need - 2 - Unit A's, 2 - Unit B's, 4 - Unit C's, 1 - Unit D

Place these Units as shown at the right and stitch together. Press as desired.



Refer to the chart below and make the required number of **Block 2's** needed for your project.

## Label as Block 2

Block 2 should measure 23 inches square including seam allowances.

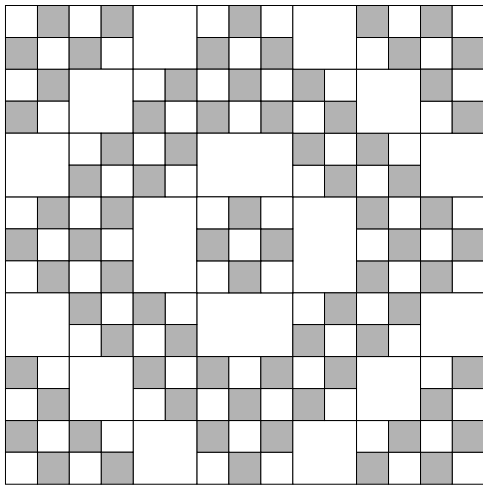
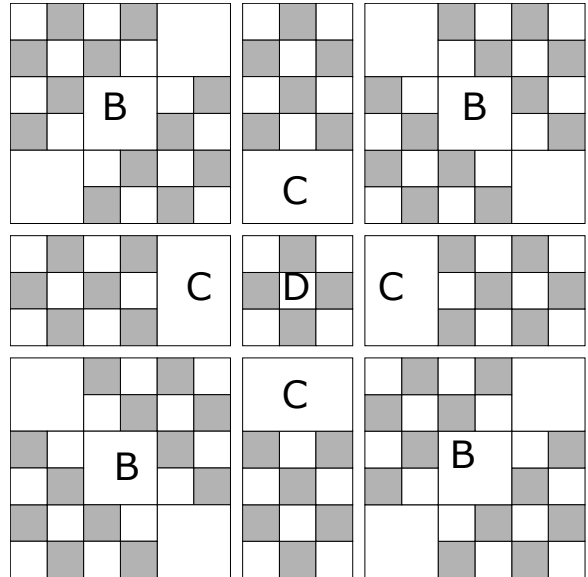
	<b>Block 2's Needed</b>
<b>Lap</b>	0
<b>Full</b>	2
<b>Queen</b>	4

# 4 Patch Frenzy Quilt

## Block 3

You will need - 4 - Unit B's, 4 - Unit C's, 1 - Unit D

Place these Units as shown at the right and stitch together. Press as desired.



Refer to the chart below and make the required number of **Block 3's** needed for your project.

### Label as Block 3

Block 3 should measure 23 inches square including seam allowances.

	Block 3's Needed
Lap	0
Full	0
Queen	1

## Sashing 4

You will need - 1 - Unit E, 1 - Unit D, 1 - Unit C

Place these Units EXACTLY as shown below left and stitch together. Press as desired. Make the required number of these Sashings for your project size.

Label as **Sashing 4**. This piece should measure 5 x 23 inches.



	Lap	Full	Queen
Sashing 4's needed	4	6	8

# 4 Patch Frenzy Quilt

## Sashing 5

You will need - 1 - Unit D, 2 - Unit C's

Place these Units EXACTLY as shown below left right and stitch together. Press as desired. Make the required number of these Sashings for your project size.

Label as **Sashing 5**. This piece should measure 5 x 23 inches.



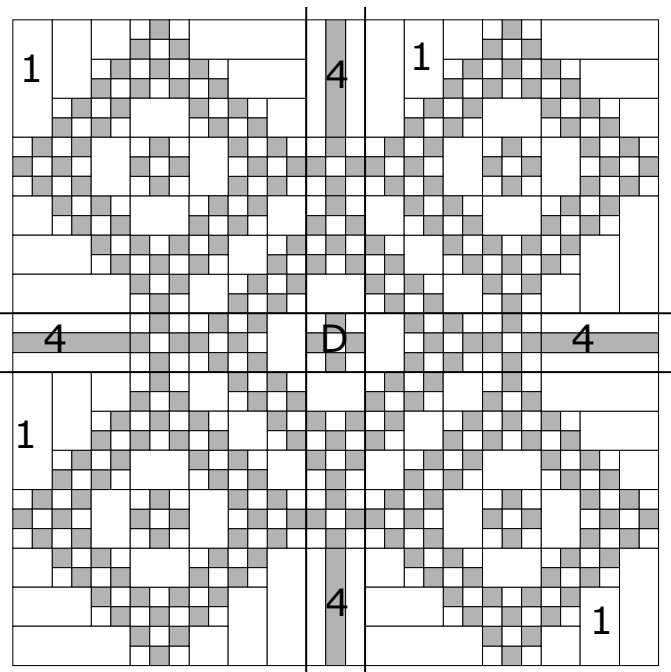
	Lap	Full	Queen
<b>Sashing 5's needed</b>	0	1	4

## Wall Quilt

You will need -

4 - Block 1's, 4 - Sashing 4's,  
1 - Unit D

Place these pieces as shown at the right and stitch together. Press as desired.



# 4 Patch Frenzy Quilt

## Inner Border

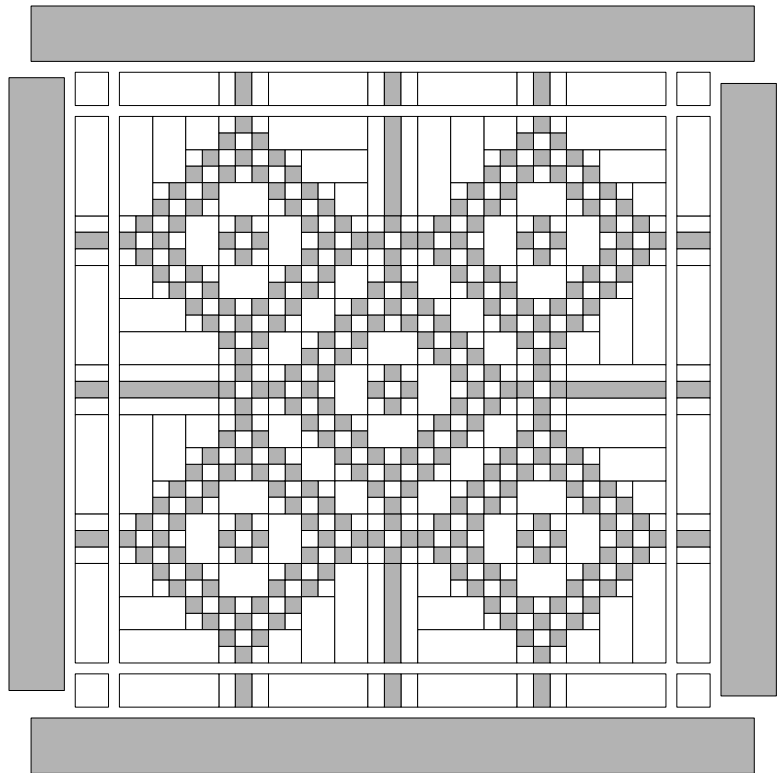
From the remaining

**3-1/2 inch Light Fabric** strips -  
**cut 16** - 3-1/2 x 9-1/2 inch  
rectangles

**cut 4** - 3-1/2 x 3-1/2 inch squares

Stitch these pieces and the **Unit F's**  
together and stitch to the quilt top for  
the inner border as in the illustration at  
the right.

The Wall Quilt should measure  
about 55 x 55 inches.

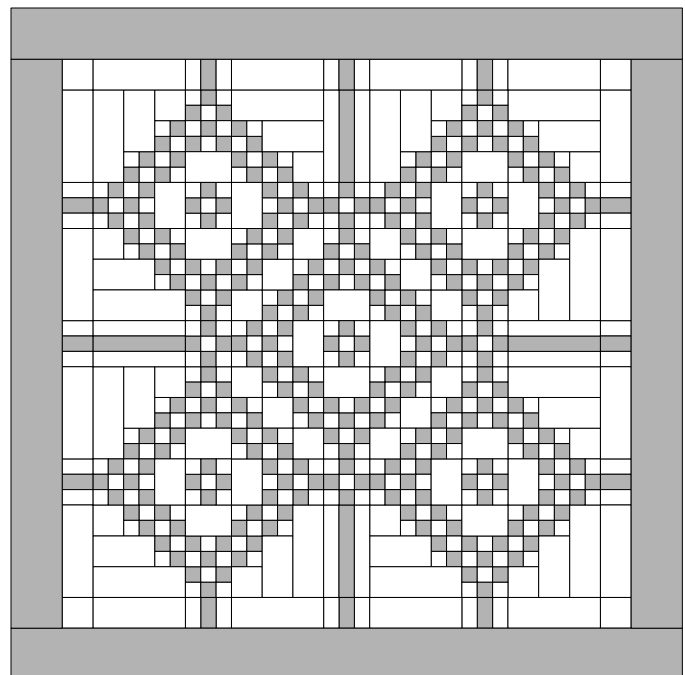


## Outer Border

From the **Outer Border Fabric**,  
**cut 6 - 5-1/2 inch** x wof strips and stitch  
these strips together along the short edges.

Stitch the outer border to your quilt in your  
usual manner.

Your quilt is now ready for quilting and should  
measure about 65 x 65 inches.



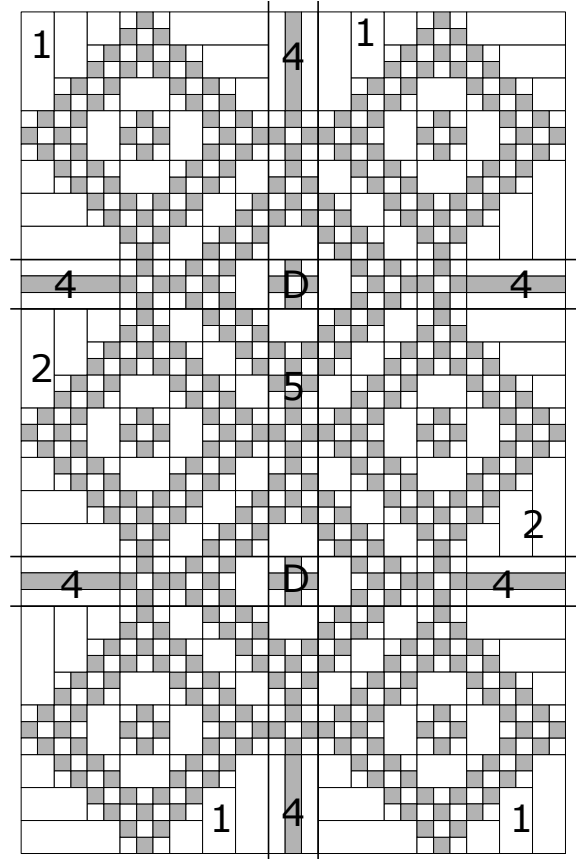
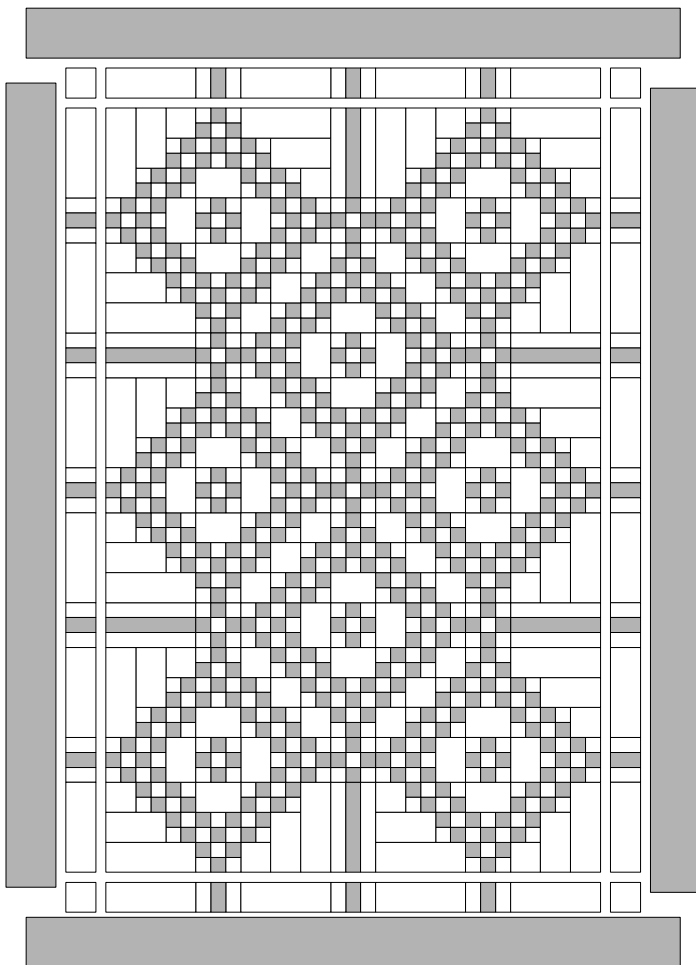
# 4 Patch Frenzy Quilt

## Full Size Quilt

You will need -

4 - Block 1's, 2 - Block 2's,  
6 - Sashing 4's, 2 - Unit D's, 1 - Sashing 5

Place these pieces as shown at the right and stitch together. Press as desired.



### Inner Border

From the remaining

**3-1/2 inch Light Fabric** strips -

**cut 20** - 3-1/2 x 9-1/2 inch rectangles

**cut 4** - 3-1/2 x 3-1/2 inch squares

Stitch these pieces and the **Unit F's** together and stitch to the quilt top for the inner border as in the illustration at the left.

The Full Quilt should measure about 55 x 86 inches.

# 4 Patch Frenzy Quilt

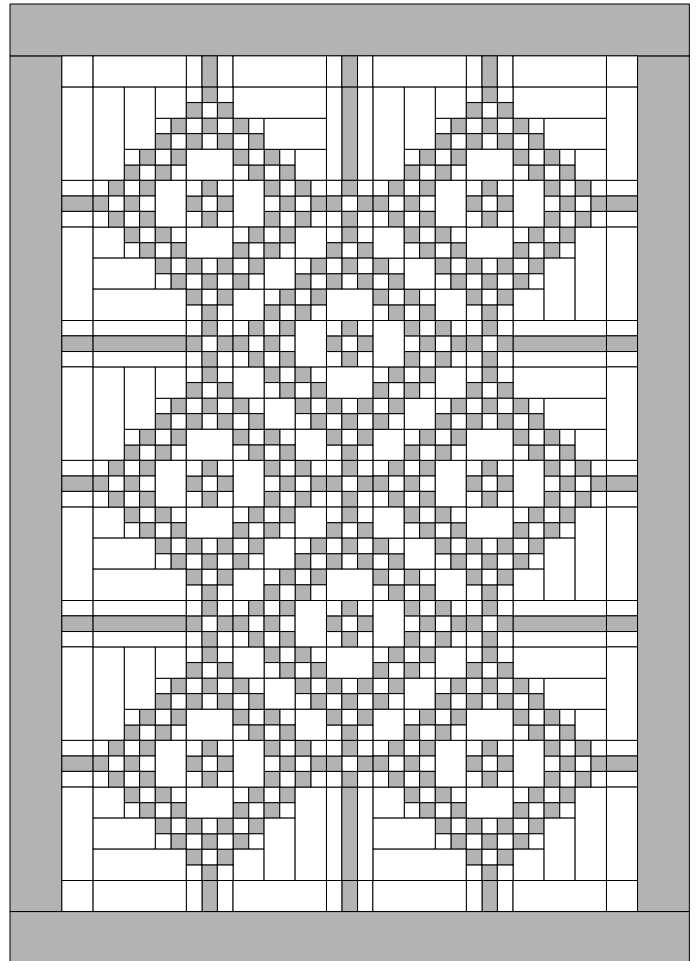
---

## Outer Border

From the **Outer Border Fabric**, cut **8 - 5-1/2 inch** x wof strips and stitch these strips together along the short edges. Press.

Stitch the outer border to your quilt in your usual manner.

Your quilt is now ready for quilting and should measure about 62 x 96 inches.



# 4 Patch Frenzy Quilt

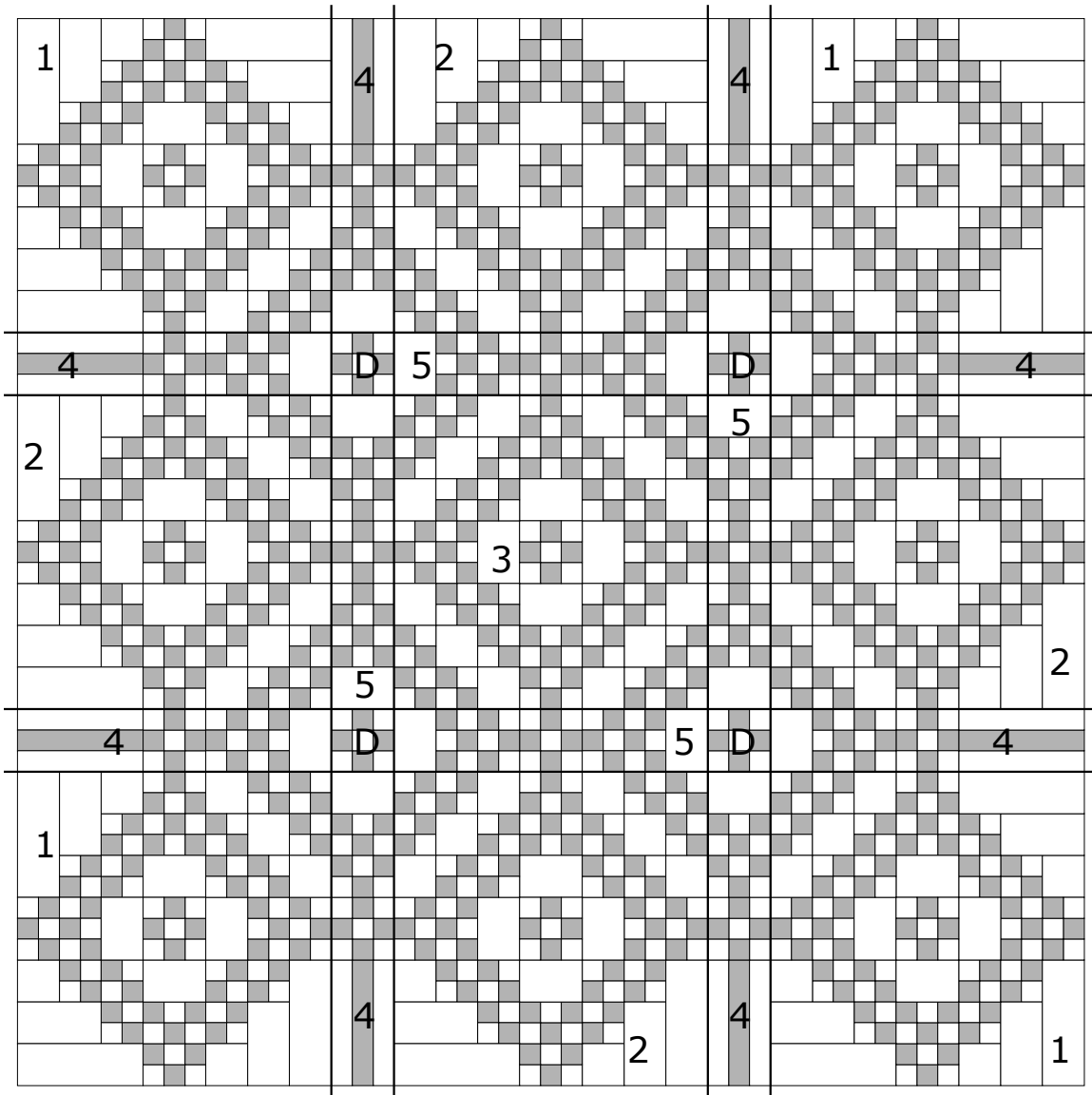
---

## Queen Size Quilt

You will need -

4 - Block 1's, 4 - Block 2's, 1 - Block 3, 8 - Sashing 4's, 4 - Sashing 5's, 4 - Unit D's,

Place these pieces as shown below and stitch together. Press as desired.



# 4 Patch Frenzy Quilt

---

## Inner Border

From the remaining

**3-1/2 inch Light Fabric** strips -

**cut 24** - 3-1/2 x 9-1/2 inch rectangles

**cut 4** - 3-1/2 x 3-1/2 inch squares

Stitch these pieces and the **Unit F's** together and stitch to the quilt top for the inner border as in the illustration at the right.

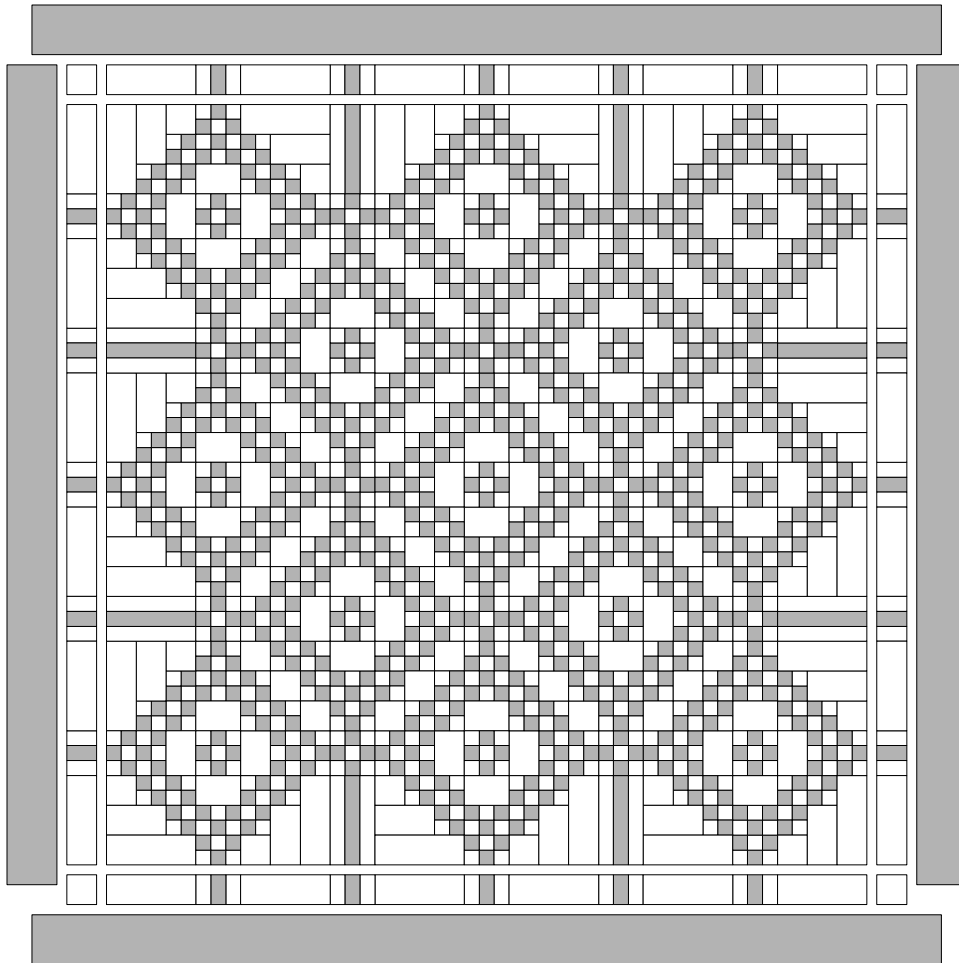
The Queen Size Quilt should measure about 86 x 86 inches.

## Outer Border

From the **Outer Border Fabric**,

**cut 8 - 5-1/2 inch** x wof strips and stitch these strips together along the short edges. Press.

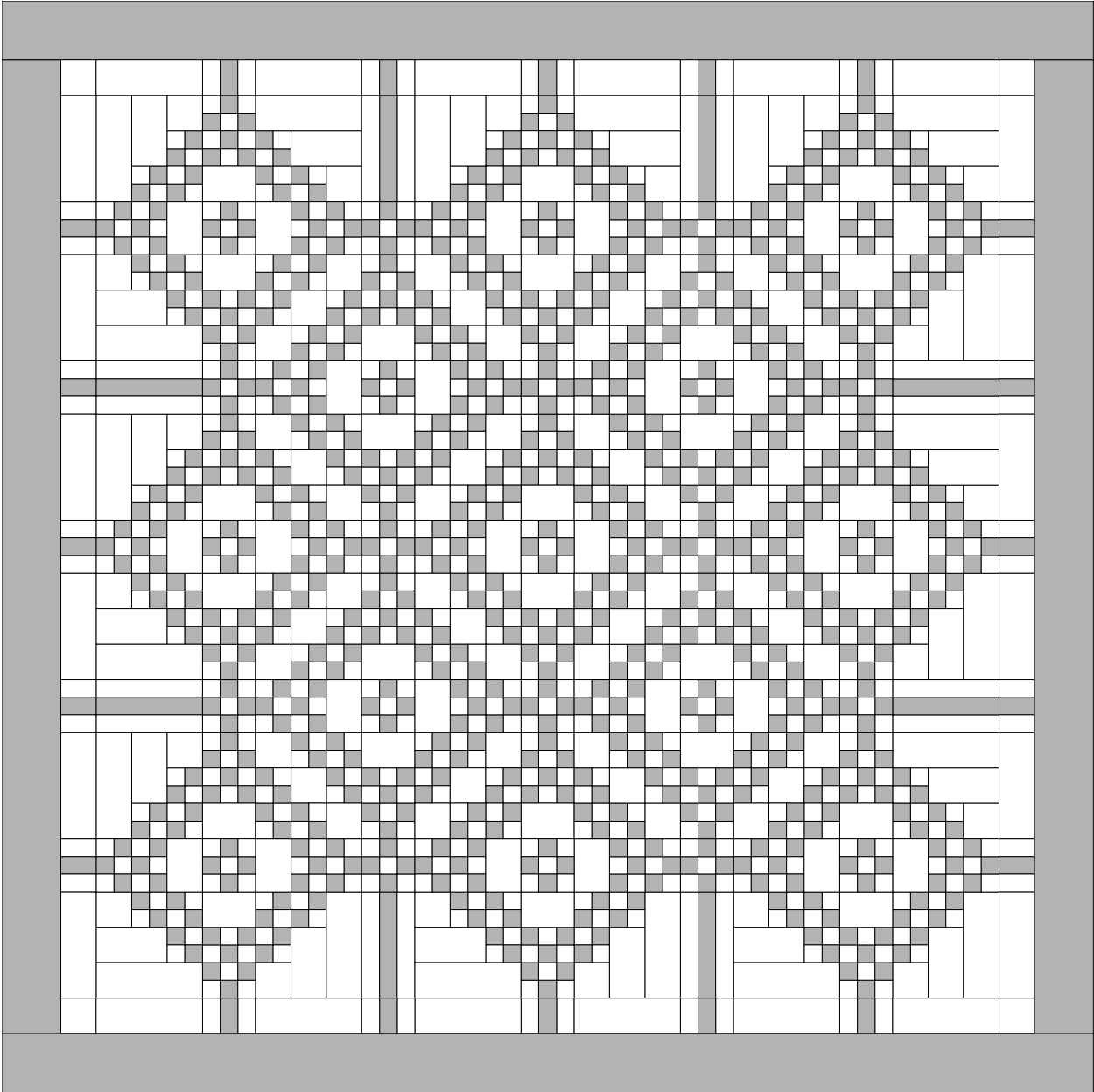
Stitch the outer border to your quilt in your usual manner.



# 4 Patch Frenzy Quilt

---

Your quilt is now ready for quilting and should measure about 96 x 96 inches.



# 4 Patch Frenzy Quilt

## Scrap Version

Construct the body of the Scrap Fabric version exactly the same as the two color version of 4 Patch Frenzy Quilt.

Use an assortment of medium and dark 2 inch fabric strips for the Dark Fabric strips. Use as many scrap fabrics as you would like. Don't worry or stress too much about the placement of the scrap fabrics in the quilt top. **What happens - happens!**

**Scrap quilts ALWAYS look great!**

Add the **Inner Border** as shown in the size of quilt you are making, then construct the **Scrap Border**.

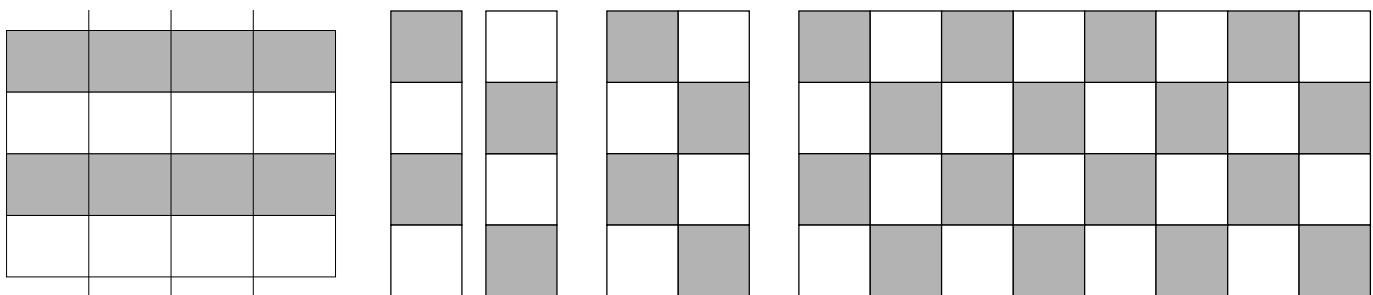
### Scrap Border ~ 4 Patch Strips

Refer to the chart below and cut the required number of 2 inch Light and Dark scrap fabric strips for your desired size of quilt.

Stitch them together along the long edges as shown below to make the required number of 4 Patch Strip Sets. Press to dark fabrics.

Cut into 2 inch strips. Cut the number required for your quilt size.

Place on two piles. Turn one pile 180 degrees so that the light and dark fabrics are opposite each other. See illustration below. Stitch these strips together to make the border piece for your quilt size.



wof = 40 inches	Lap	Full	Queen
2 inch x wof Light Scrap strips	16	20	22
2 inch x wof Dark Scrap strips	16	20	22
4 Patch Strip Sets	8	10	11
Cut _____ 4 Patch Strips	148	182	216
4 Patch Strips Top Border	37	37	54
4 Patch Strips Bottom Border	37	37	54
4 Patch Strips Right Side Border	37	54	54
4 Patch Strips Left Side Border	37	54	54

# 4 Patch Frenzy Quilt

## Inner & Outer Borders

From the **Black Fabric**, cut the following

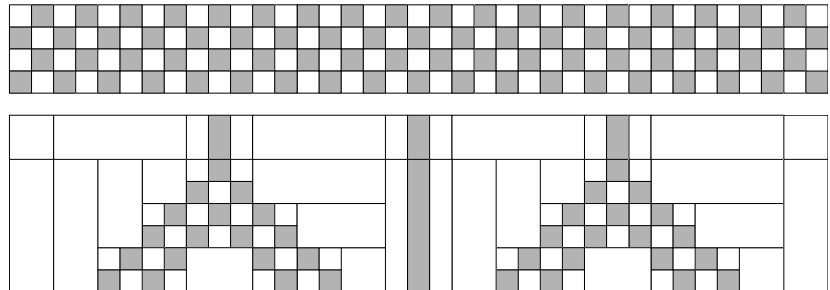
	Lap	Full	Queen
2 inch x wof Black Fabric strips	13	16	19
Corners - 9-1/2 inch squares	4	4	4

Stitch the short edges of the Black Fabric together and press. Do not cut to size yet.

## Top Border

**MEASURE** the Scrap Border against the body of the quilt. The Scrap Border measurement should be the same as the raw edge to raw edge measurement of the quilt.

NOTE: Lap Quilt will be shown in the following illustrations.

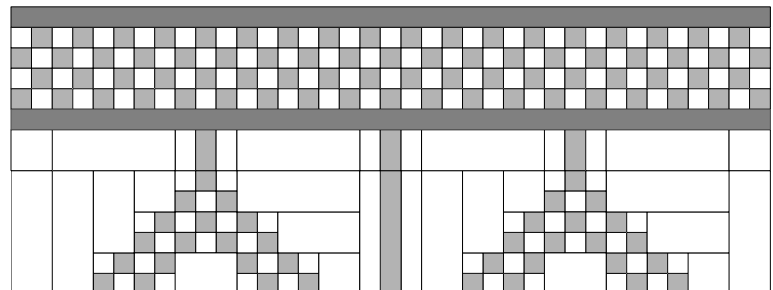


If the Scrap Border is **SMALLER** than the body of the quilt add the amount necessary to make the border match the body of the quilt. ADD extra Black Fabric to one (or both) edges of the Scrap Border.

If the Scrap Border is **LARGER** than the body of the quilt, remove the extra 4 Patch Strip(s), and, if needed, add black fabric to one (or both) edges of the border to make it match the body of the quilt measurement.

Take the measurement of the Scrap Border (now that it has been adjusted to match the body of the quilt) and cut **TWO** pieces of the Black Fabric to match this measurement. Stitch the Black Fabric to both long edges of the Scrap Border. Press towards black fabric.

Stitch this (large) border to the body of the quilt. Press towards the black fabric.



# 4 Patch Frenzy Quilt

---

## Bottom Border

Repeat this process – measuring, cutting and stitching - for the bottom border.

## Side Borders

Repeat the above process to make the Scrap Borders to match the sides of the quilt.

Before stitching the border to the body of the quilt, stitch the Black Fabric, 9-1/2 inch square corners to the short edges of the border. Then stitch to the body of the quilt. Press as desired.

Quilt is now completed and ready for quilting and then binding.

